

2023 Overlay Improvements
Sauk Rapids, Minnesota

Project Update



SAUKR 169592

Project Team | May 2023 | Project Update No. 1

SEH Project Manager

Scott Hedlund, PE
612.865.3509
shedlund@sehinc.com

Hello and welcome to the *2023 Overlay Improvements Project Update*. In this and upcoming issues, we will be updating you on the project status and help answer frequently asked questions. If you wish to receive future Project Updates via email, please provide your email to Melissa Blommel at mblommel@sehinc.com.

SEH Project Engineer

Jarod Griffith, PE
218.849.0539
jgriffith@sehinc.com

This Project Update will be the only paper updated issued. All future project updates will be ELECTRONIC ONLY by email or the project website.

Project Website: www.sehinc.com/2023OverlaySaukRapids

SEH Field Representatives

Robert Hatch
612.636.2421
rhatch@sehinc.com

The project team consists of the City of Sauk Rapids, SEH, and Minnesota Paving & Materials. SEH is the engineering firm that serves as the City Engineer for the City of Sauk Rapids and will serve as the contact between the contractors and residents/property owners. All questions should initially be directed to SEH.

Jeff Supan
320.250.3381
jsupan@sehinc.com

Robert Hatch, SEH's Field Representative, will be on-site during active construction to observe project progress. He is the fastest link to problem solving because he communicates directly with everyone on the construction team. Do not hesitate to contact Robert Hatch at 612.636.2421 with any questions you may have. If you are unable to reach Robert in the field, please contact Jeff Supan at 320.250.3381 or Jarod Griffith at 218.849.0539 in the SEH office.

City of Sauk Rapids

Ross Olson
320.258.5315

Project Status and Schedule

The City of Sauk Rapids publicly bid the project and awarded the construction contract in April to the low bidder Minnesota Paving & Materials of Rogers, MN. Minnesota Paving & Materials (MP&M) is the General Contractor responsible for the overall project and will perform the bituminous paving operations.

General Contractor

Minnesota Paving & Materials
Rand Syverson
651.295.4374
rand.syverson@minnmp.com

Subcontractors working with MP&M for other work items include:

- Superior Traffic (Traffic Control)
- North Star Landscaping (Erosion Control and Turf Establishment)
- Kraemer Trucking (Removals and Grading)
- C&L Excavating (Storm Sewer and Adjusting Valve Boxes)
- Herness Construction (Mailboxes)
- French Lake Curb (Concrete)
- Midstate Reclamation (Bituminous Milling)
- Premier Tech of MN (Striping)

MP&M and their subs (Contractor) are scheduled to begin work on Wednesday, May 31st with traffic control and erosion control set-up. The Contractor is planning a moving operation, with the following construction schedule, subject to change, and the weather:

- June 1st – Start targeted curb and sidewalk removals, pouring to follow.
- June 12th – Start reclaiming and Milling operations for Phase 1, paving to follow.
- June 26th – Start reclaiming and Milling operations for Phase 2, paving to follow.

The substantial completion date for construction of the 2023 Overlay Improvements is set for the middle of October, weather permitting, and subject to change.



Description of Project

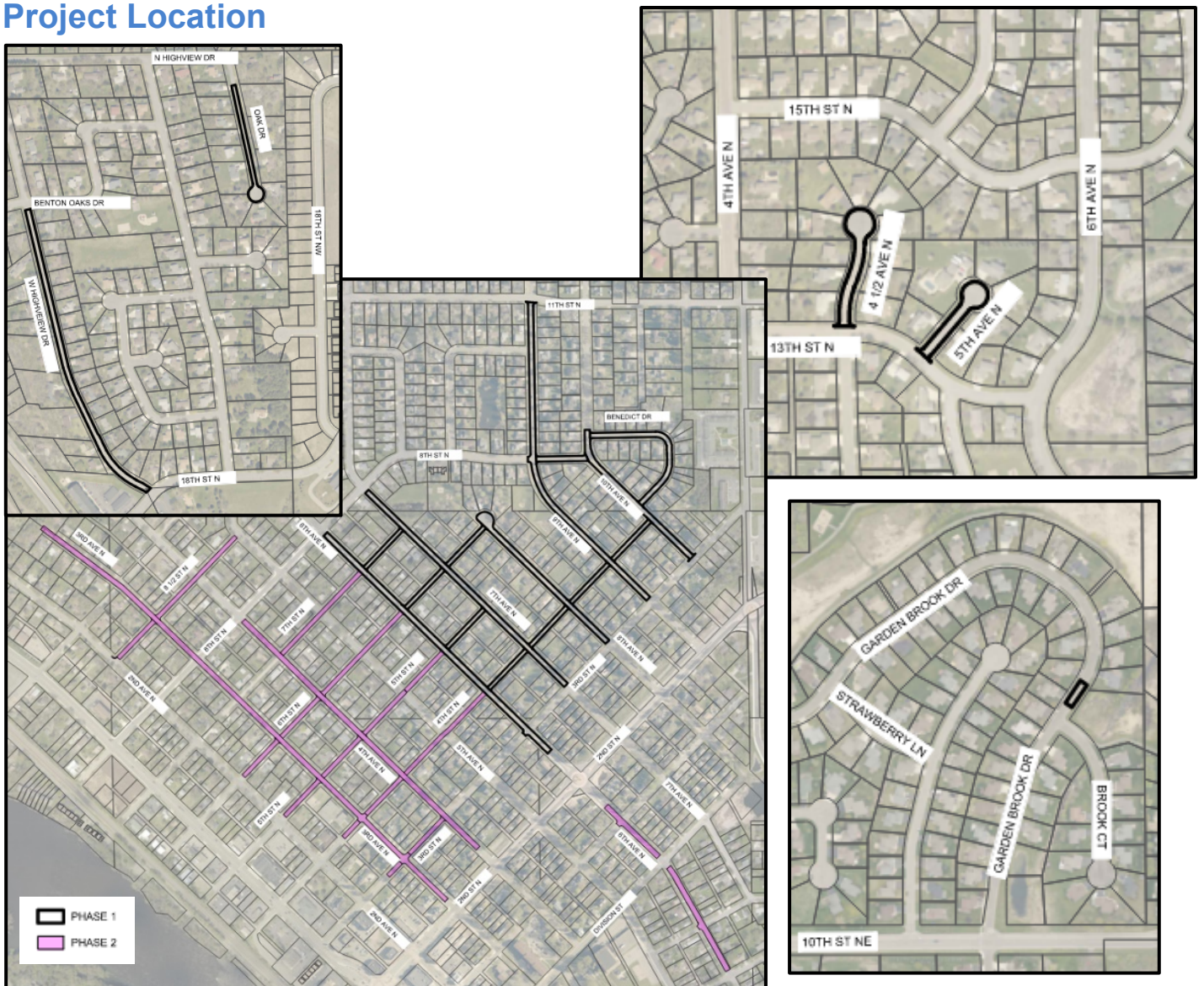
Below is a location map showing the project limits. This is a street resurfacing type project. The primary rehabilitation techniques being employed are either reclaiming (i.e., pulverizing) or milling the existing pavement and paving two layers of new bituminous surfacing over the top. However, there are some targeted areas where there will be a minor subcut to remove and replace material with new aggregate base prior to paving. The project scope also consists of isolated curb and driveway repairs, new concrete valley gutter installation, and pedestrian crossing improvements, as well as work on some storm sewer structures. Work is planned to be constructed under traffic except for some temporary block or intersection closures for excavating and concrete valley gutter work.

The City completed all of planned water valve and hydrant improvements ahead of this project with the intent to minimize any temporary impacts to your water service. Intermittent temporary water shutoffs may still be necessary during construction. The City and or Contractor will provide notices for temporary water shutoffs to affected customers as necessary. These notices will include details such as the date and estimated time frame for the shutoff so you can plan around it as best you can.

Please note that some of the concrete repair work will temporarily impact driveway and alley access, or close one end of a street. These areas will not be vehicle-accessible when concrete is being poured and curing. Concrete can take up to 7 days to properly cure prior to driving a vehicle on it. If your driveway is impacted, please park on side streets outside of the project area during this time.

In general, if you see construction activity starting on your street please avoid parking on the street until further notice. The Contractor and SEH will continue to communicate parking and access restrictions as the project moves forward.

Project Location



Frequently Asked Questions

Q: *What kind of activity can I expect during construction?*

A: Construction is tedious, and we understand it can get old quickly. At times, it may even seem like not much is getting done. Remember, patience is the biggest asset that each of you bring to the job. If you keep in mind the fact that this project will be completed, hopefully construction will seem to go faster for you!

In addition to the General Contractor, there will be several subcontractors working at various times on site. There may also be private utility companies (gas, cable television, telephone, and electric) on the site locating, moving, and or replacing existing lines. Please bear with us, the General Contractor has a fixed amount of time to get the work done, and we will be working with all parties involved to help see that this time commitment is met.

Q: *What will be done about construction dust?*

A: The contract provides for the Contractor to spread water on the road as necessary to help keep dust from creating an unsafe environment. However, this is an imperfect solution and will not solve the problem completely.

Q: *What will happen to the landscaping, fences, or planters that are on the boulevards?*

A: The Contractor will generally salvage any special landscaping located within the right-of-way and will place it on your property. If you wish to have material placed in a certain area, please let us know in advance and we will try to accommodate you. The Contractor will not reinstall any landscaping removed from the right-of-way or easement areas. Flowers by mailboxes will be removed and not replaced.

Q: *What will happen to my sprinkler system or pet containment system during construction?*

A: Due to nature of the project, it is anticipated there may be impacts to sprinklers or pet containment systems behind the back of the curb. Property owners who have a sprinkler system or pet containment system in the right-of-way and next to the edge of curb and gutter are encouraged to contact Robert at 612.636.2421 to inquire on potential impacts. It may be necessary for you to temporarily remove a portion of your sprinkler or pet containment system within the public right-of-way or public easement area. The sprinkler distribution pipes should be exposed and pulled up to the property line, so they are visible to the Contractor. Since the sprinkler heads are often the most expensive component of the system, consider removing them from the distribution pipes. Apply duct tape to the end of the pipes to keep out dirt and debris. The City and Contractor will not be liable for damage to sprinkler systems that are installed within the public right-of-way. Residents should reinstall the systems after the turf restoration work is complete.

Q: *How will the turf areas disturbed by construction be restored?*

A: The Contractor will repair the disturbed areas of your yard with topsoil and seed. It is essential that you water the new seed regularly to help it establish. The Contractor is required to water and maintain the seed for a short period of time after it has been placed to ensure growth. Most Contractors do this with a tanker truck and hose, which means water is applied quickly in one or two passes every few days. The Contractor will give you a product that will grow, but it will not be perfect. It is essential that you water the new seed regularly if you want a lush, green, well-established lawn.

Q: *What about my garbage and recycling during construction?*

A: You will continue to place your garbage and recycling containers at the end of your driveway/alley location as normal. The General Contractor may need to collect and get them to a location the garbage and recycling company can dispose of the items. The Contractor will then bring your container back to your driveway/alley location.

Q: *How will I receive my mail during construction (not applicable for PO boxes)?*

A: At this time, we are not anticipating any changes in your mail service during construction since there aren't mailboxes by the streets in the project area.

URGENT

**IMMEDIATE
ATTENTION NEEDED**

Special Information

It is very important that anyone with special needs or disabilities contact us as soon as possible. We are in the process of working with emergency response organizations to locate any residences that may have a special need, so we are fully aware of the issues throughout construction and if quick response is needed to any specific residence(s), there is a plan in place. Contact Jeff Supan with SEH at 320.250.3381.



Preservation of Construction Stakes and Utility Flags We need your help!

Please do not remove any wooden stakes you will see temporarily placed on the boulevards. These stakes are used by the Contractor to construct the project and are expensive to replace.

Also, please do not remove or relocate the colored utility location flags. These flags, in conjunction with the spray paint markings on the ground, are necessary for the Contractor to locate buried utilities. We understand these flags may be unsightly and difficult to mow around, but we need your help to protect the construction crews and residents in your neighborhood.

Your help in keeping bystanders away from the construction area will ensure the project will progress safely.

Construction Zone

Barricade and road closure signs may be installed throughout the project area to protect motorists during construction. Please pay careful attention to the warning signs! “Road Closed” signs are used where the road is impassable and closed to all traffic except for the Contractor’s equipment or officially authorized vehicles. “Road Closed to Thru Traffic” signs are used where through traffic must detour to avoid a closure some distance beyond the sign, but where local traffic can move up to the point of closure. In this instance, local traffic would be defined as residential traffic from the particular street under construction.

There will also be times during construction that direct access to your driveway will be limited, particularly when storm sewer is being installed, the road is being subcut, when concrete is being placed and is curing, and when fresh, hot bituminous is being constructed. Access to your property is important to us, and Contractor will work to minimize those times that access must be limited.

As the Contractor’s operations move during the course of construction, you may observe that signs and barricades move as well. We understand this may be frustrating! Please allow extra time in your schedule as you drive through the construction zone. Please advise your family and guests to exercise caution and safe driving speeds. Be sure workers and heavy equipment operators see you before driving around them.

Short Elliott Hendrickson Inc.
2351 Connecticut Avenue, Suite 300
Sartell, MN 56377-2485



«TAXPAYER_N»
«TAXPAYER_A»
«TAXPAYER_C», «TAXPAYER_S» «TAXPAYER_Z»

Project Update

**2023 Overlay Improvements
Sauk Rapids, Minnesota**

Affirmative Action–Equal Opportunity Employer